

This route, starting at the Kawauchi Onsen hot spring facility, lets you enjoy food, culture, history and luxurious relaxation in Kawauchi Village. Go through the village hall and stop by Tenzan Bunko to see how the seasonal views, the late poet Shinpei Kusano and Kawauchi Village are all connected. The views and monuments also convey the village's prosperous past in forestry.

Route Outline



Kawauchi Village Manpuku Walking Route - Full Hearts and Stomachs -

Distance: 3.5km (approx.)
Terrain: Flat

Scan the QR code to view the map



Route Guide

1 How To Walk This Route

This flat, easily walkable route covers about 3.5 km and is best enjoyed in early spring or autumn. After your walk, enjoy a soak at Kawauchi Onsen, also known as Beauty Springs, famous for its wide variety of hot springs.

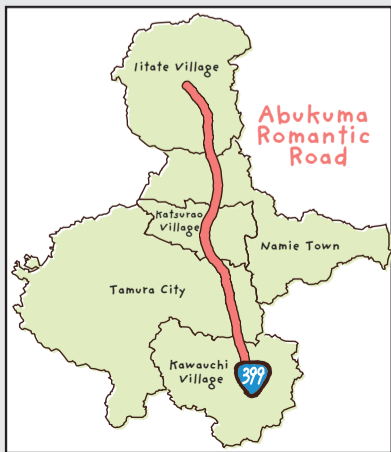
2 Manpuku Walking Route

Kawauchi Village is renowned for its soba (buckwheat) production, with 100% soba noodles, soba beer and soba manju (steamed buns) made using the soba grown here. The area boasts many other famous products, including Japanese char and perilla oil. Buy Kawauchi Village's specialties at Are-kore Market and Soba Shubo Tenzan.



3 Abukuma Romantic Road

This is the official nickname for the area consisting of Kawauchi Village, Tamura City's Miyakoji Village, Katsurao Village, Namie Town and Iitate Village in Fukushima Prefecture's Abukuma Kogen region on National Route 399.



Footpath website



Commerce and Tourism Representative, Industrial Promotion Division

+81-240-38-2112

Kawauchi Village Hall

Inquiries

Joban Expressway: Approx. 30 min. from Joban-Tomoka Interchange
Ban-Etsu Expressway: Approx. 30 min. from Ono Interchange

Access

- Take your trash home with you.
- Do not remove plants, animals, crops or flowers.
- Do not trespass on private fields or other property.
- Be aware of wildlife and changing weather conditions.
- Remain on footpaths whenever possible.
- Exercise caution, especially when crossing roads.
- Be respectful of locals maintaining and managing the area, and do not disturb them.

Footpath Manners

Footpath walking offers a relaxing way to enjoy the features of an area. Whether you're strolling solo or with friends and colleagues, this style of walking — which originated in the United Kingdom — allows you to enjoy the natural sights and seasonal scenery as you follow the map. Footpath walking is also a wonderful way to maintain good health and relieve stress.

What is Footpath Walking?

enjoy

Points of Interest



Café Amazon

Café Amazon, a project started in 1988 to support people in Thailand's mountainous regions, has over 2,300 shops in Thailand. The branch in Kawauchi is Japan's first.



Open: 11:00-17:00. Closed: New Year's holidays.



Kawauchi Kusano Shinpei Memorial Museum: Tenzan Bunko

Tenzan Bunko, with its distinctive thatched roof, is set in a beautiful location.



Poet Shinpei Kusano was named an honorary villager in 1960.

Open: 9:00-16:00. Closed: Mondays.

Admission: Standard 300 yen / High school and college students 250 yen / Junior high and elementary school students 150 yen



Moritarou Manhole Covers

Colorful manhole covers featuring Moritarou, the village's official mascot, can be found at five locations, including at the village hall. See if you can find them all!

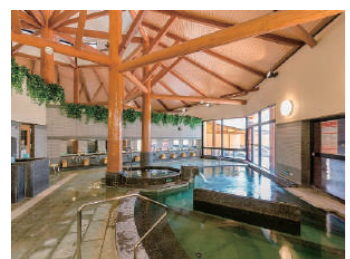


Kawauchi Village

Footpath Map

① Kawauchi Onsen

Start and Goal



A uniquely designed, octagon-shaped hot spring facility nicknamed Beauty Springs due to its high-alkaline water with skin-smoothing properties.

Open: 10:00-20:30.
Closed: Tuesdays.

② Are-kore Market



A vendor next to Kawauchi Onsen offering superb, freshly picked vegetables and homemade cuisine.

③ Kawauchi Kusano Shinpei Memorial Museum: Tenzan Bunko

A museum with many works by "kaeru" poet Shinpei Kusano. Inspired by Kawauchi, he visited nearly every year and was named an honorary villager. This was his villa and library. Enjoy the thatched roof and Japanese garden.



Start and Goal

① Kawauchi Onsen

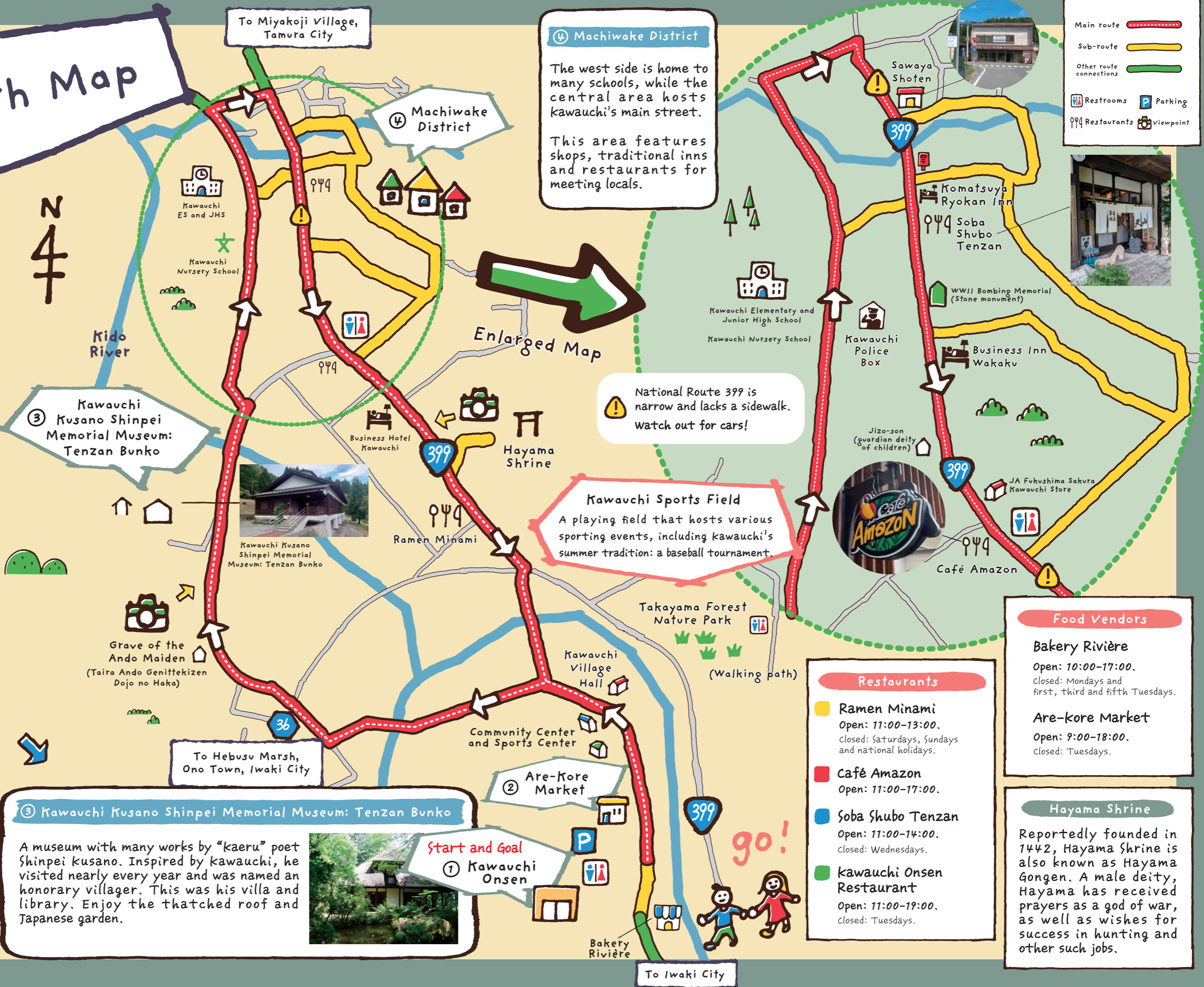
④ Machiwake District

The west side is home to many schools, while the central area hosts Kawauchi's main street. This area features shops, traditional inns and restaurants for meeting locals.

National Route 399 is narrow and lacks a sidewalk. Watch out for cars!

Kawauchi Sports Field
A playing field that hosts various sporting events, including Kawauchi's summer tradition: a baseball tournament.

Main route
 Sub-route
 Other route connections
 Restrooms
 Parking
 Restaurants
 Viewpoint



Food Vendors

Bakery Rivière
Open: 10:00-17:00.
Closed: Mondays and first, third and fifth Tuesdays.

Are-kore Market
Open: 9:00-18:00.
Closed: Tuesdays.

Restaurants

Ramen Minami
Open: 11:00-13:00.
Closed: Saturdays, Sundays and national holidays.

Café Amazon
Open: 11:00-17:00.

Soba Shubo Tenzan
Open: 11:00-14:00.
Closed: Wednesdays.

Kawauchi Onsen Restaurant
Open: 11:00-19:00.
Closed: Tuesdays.

Hayama Shrine

Reportedly founded in 1442, Hayama Shrine is also known as Hayama Gongen. A male deity, Hayama has received prayers as a god of war, as well as wishes for success in hunting and other such jobs.